



SSR marker-based DNA fingerprinting of *Sub1* introgressed lines in the background of traditional rice varieties of Assam India

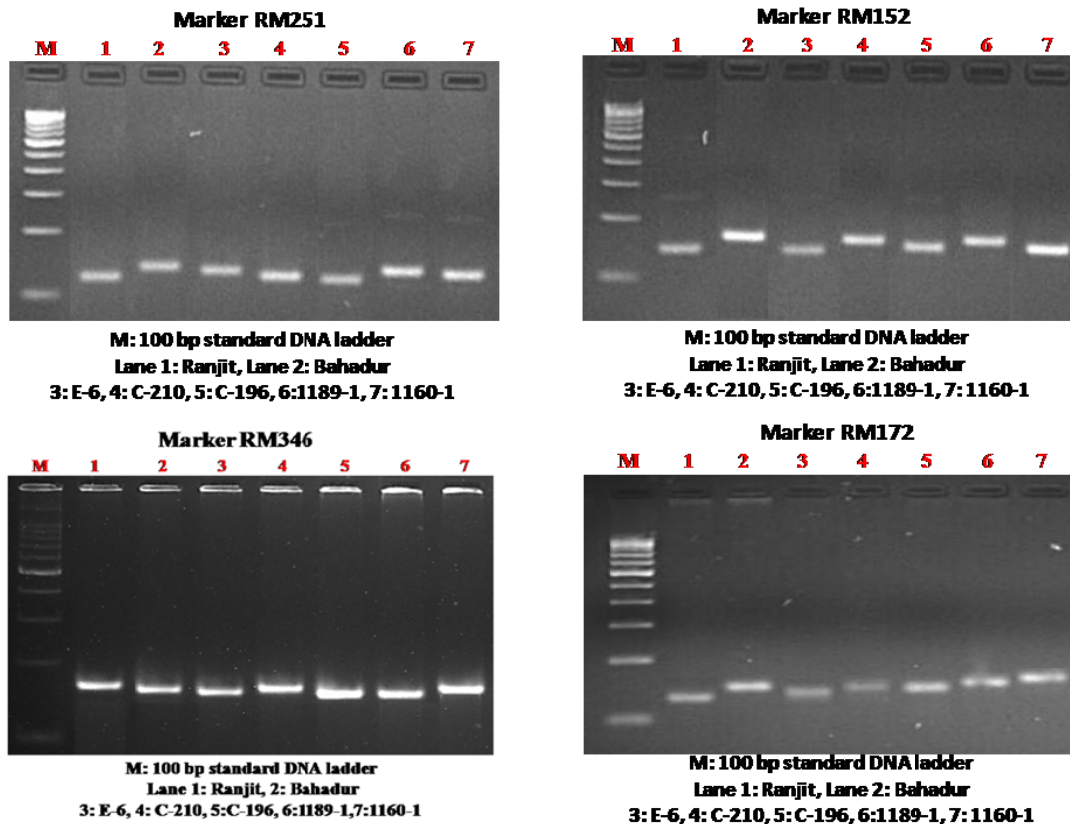
Ashish Gautam^{1*}, SK Chetia^{1,2}, Vinay Sharma³, Rahul K Verma³, Munmi Phukon², Monalisa Kalita²,
MK Modi³ & T Ahmed²

¹Department of Plant Breeding and Genetics; & ³Department of Agricultural Biotechnology,
AAU, Jorhat-785 013, Assam, India

²Regional Agricultural Research Station, AAU, Titabar-785 630, Assam, India

Received 12 February 2022; revised 21 March 2022

Supplementary Data



Suppl. Fig. 1 — DNA Fingerprinting profile of *sub1* introgressed advance lines including parents as a check with SSR markers viz. RM 152, RM 251, RM 172 and RM 346