

Supplementary Information

Synthesis, spectral, antibacterial and docking analyses of (3,4-bis((*E*)-(arylidene)amino)phenyl)(phenyl)methanones

I Muthuvel^{a,b}, S Manikanadan^a, G Thirunarayanan^{a,*}, V Usha^c & V Sathiyendiran^d

^a Department of Chemistry, Annamalai University, Annamalaiagar 608 002, India

^b Department of Chemistry, M.R. Government Arts College, Mannargudi 614 001, India

^c Department of Chemistry, University College of Engineering Panruti, Panruti 607 106, India

^d Department of Chemistry, Sourashtra College, Madurai 625 004, India

*E-mail: drgtnarayanan@gmail.com, thirunarayanan.g.10313@annamalaiuniversity.ac.in

S. No.	Contents	Pg. No.
1	Fig. S1-S6 — ¹ H-NMR spectrum of Compound Va	2-4
2	Fig. S7-S12 — ¹ H -NMR spectrum Compound Vd	5-10
3	Fig. S13-S18 — IR spectrum of Compound Vd	11-16

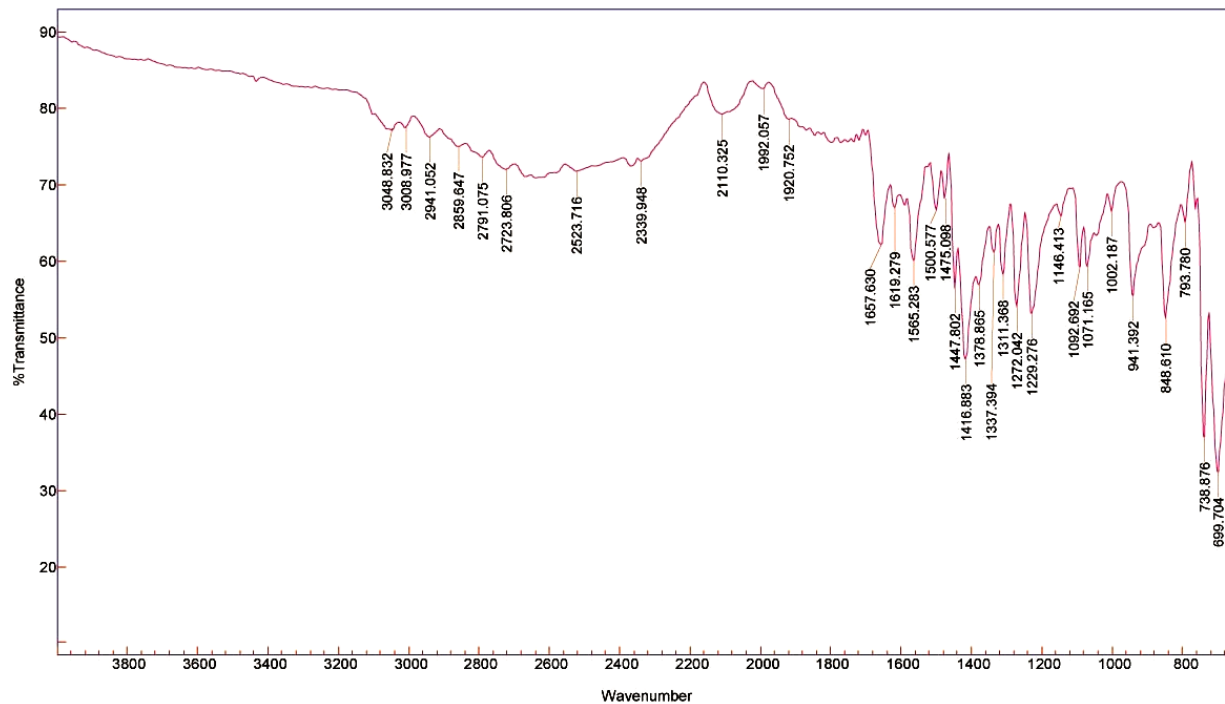


Fig. S1 — IR spectrum of (3,4-bis(*E*)-benzylideneamino)phenyl)(phenyl)methanone

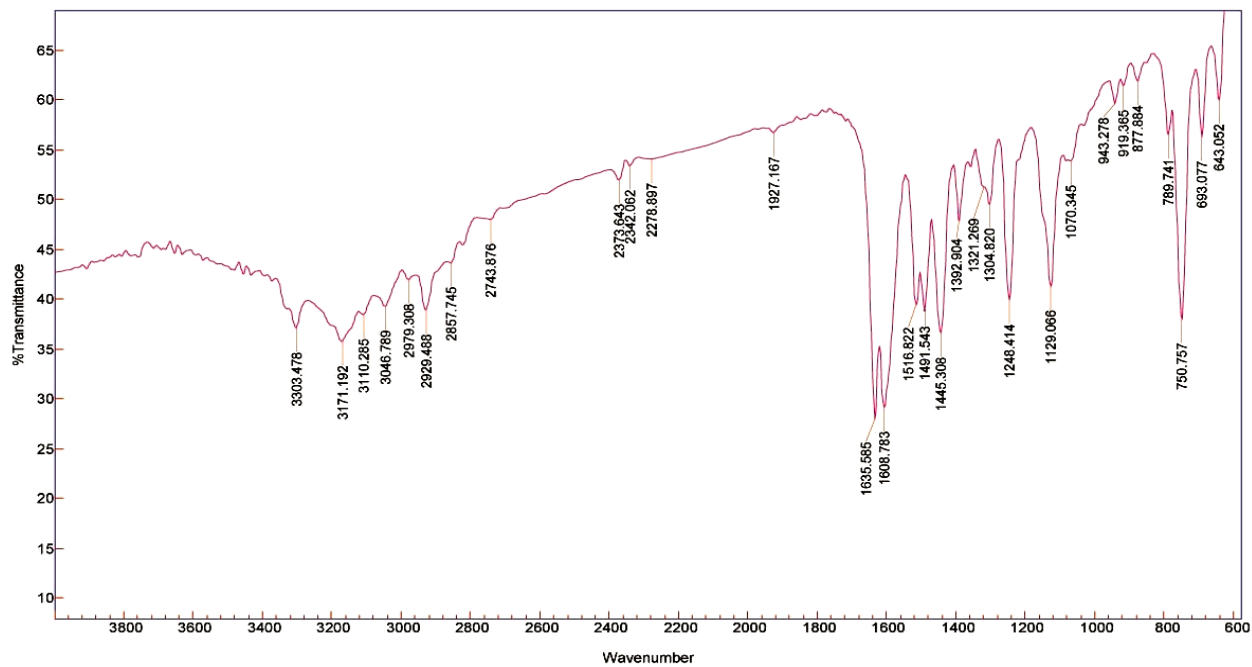


Fig. S2 — IR spectrum of (3,4-bis(*E*)-(4-fluorobenzylideneamino)phenyl)(phenyl)methanone

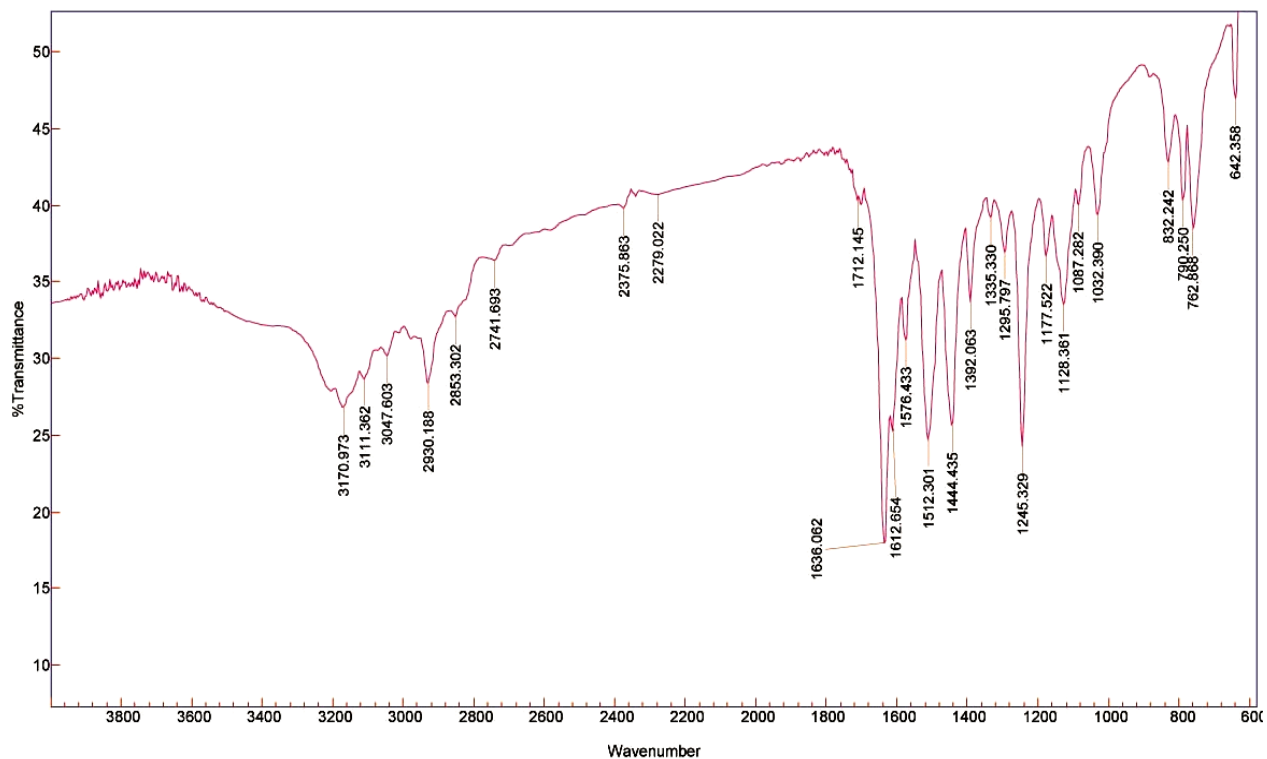


Fig. S3 — IR spectra of (3,4-bis(*E*)-(4-chlorobenzylideneamino)phenyl)(phenyl)methanone

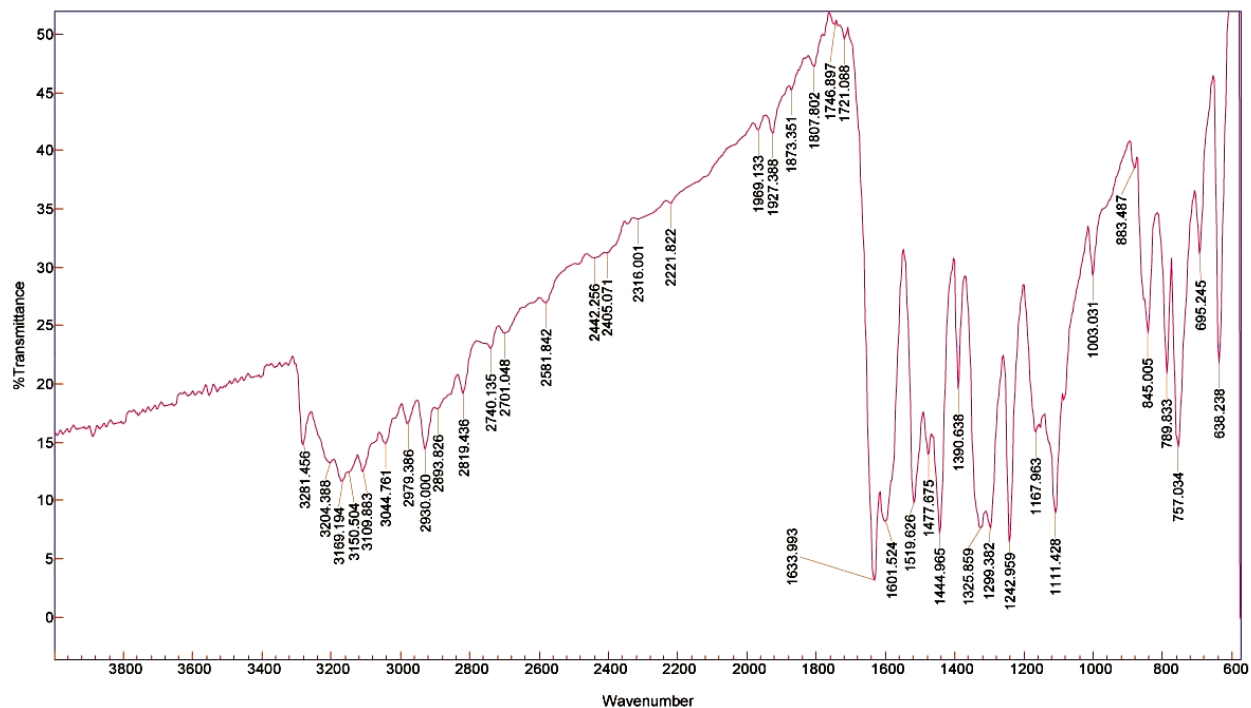


Fig. S4 — IR spectra of (3,4-bis(*E*)-(4-bromobenzylideneamino)phenyl)(phenyl)methanone

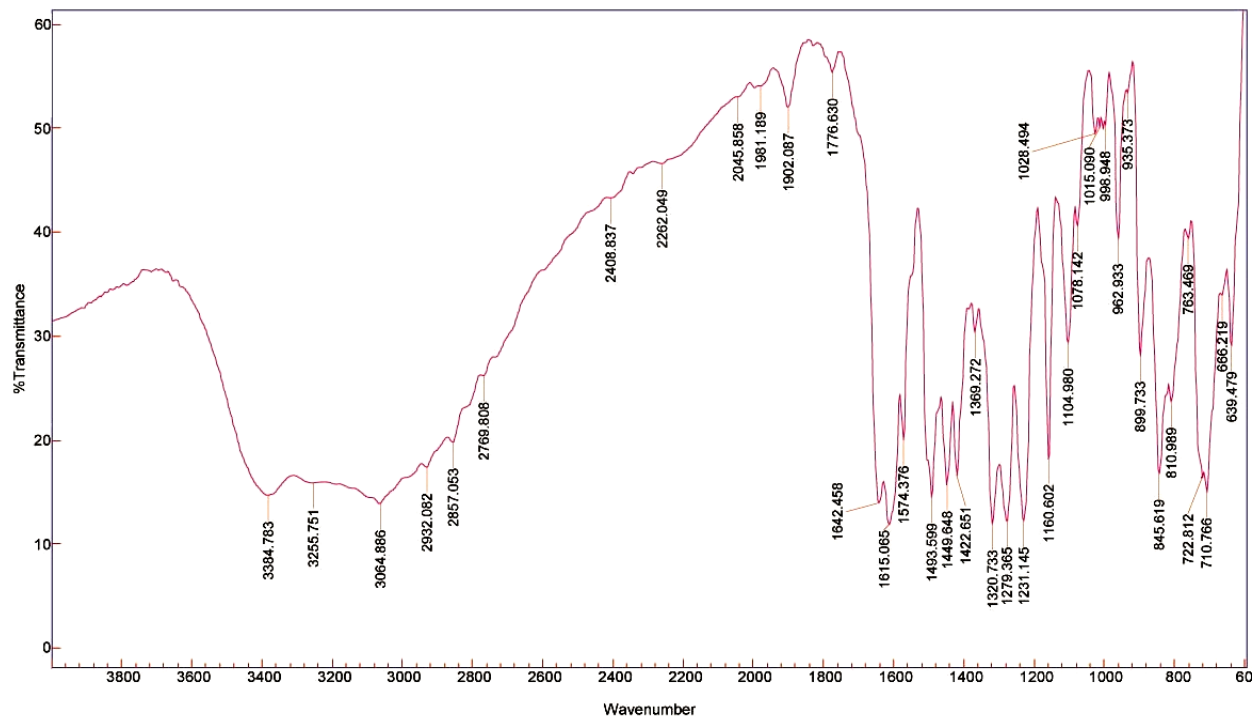


Fig. S5 — IR spectra of (3,4-bis((E)-(4-methylbenzylideneamino)phenyl)(phenyl)methanone

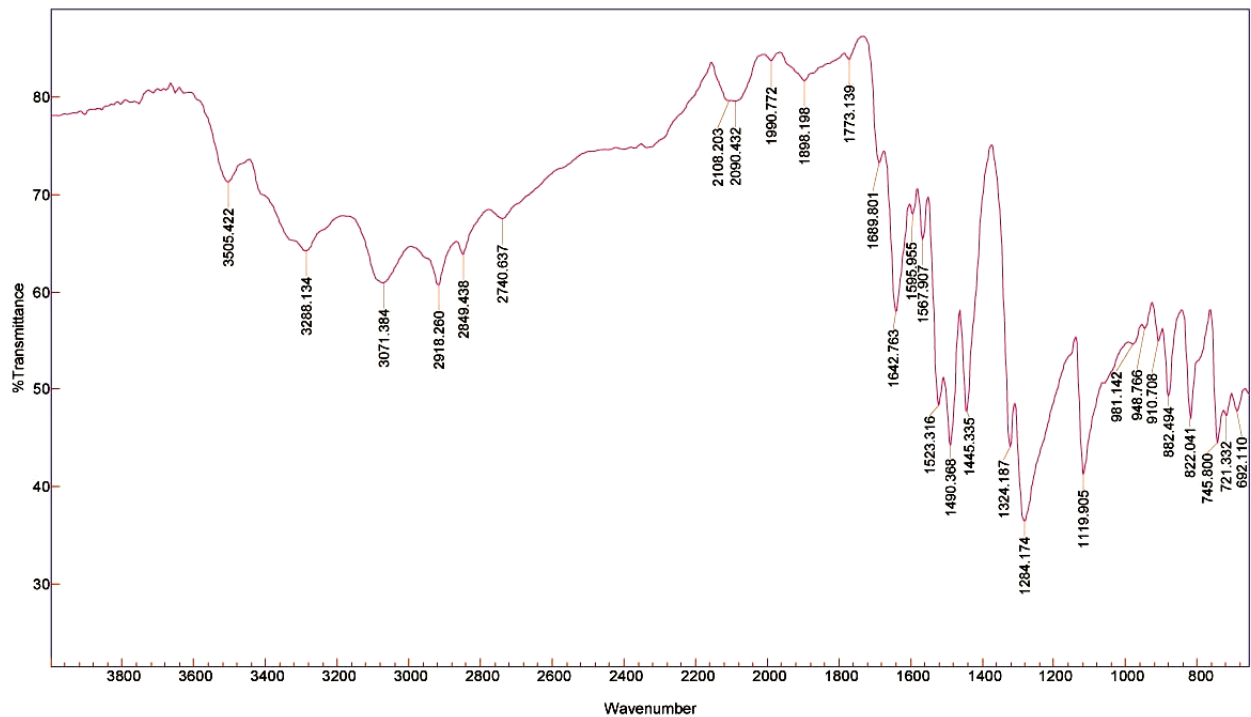
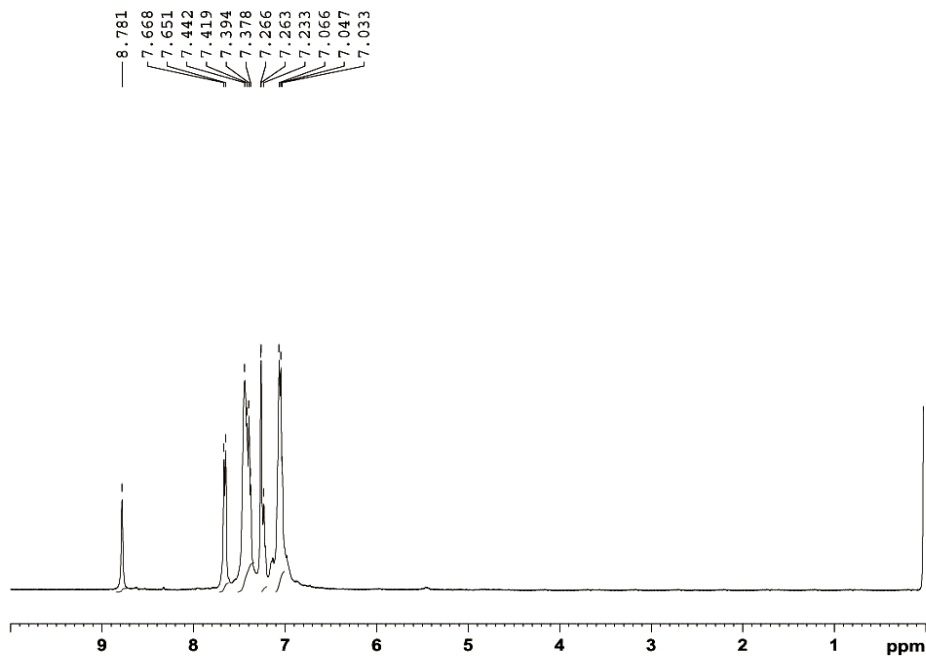


Fig. S6 — IR spectra of (3,4-bis((E)-(4-methoxybenzylideneamino)phenyl)(phenyl)methanone



```

Current Data Parameters
NAME          ROC1
EXPNO        1
PROCNO       1

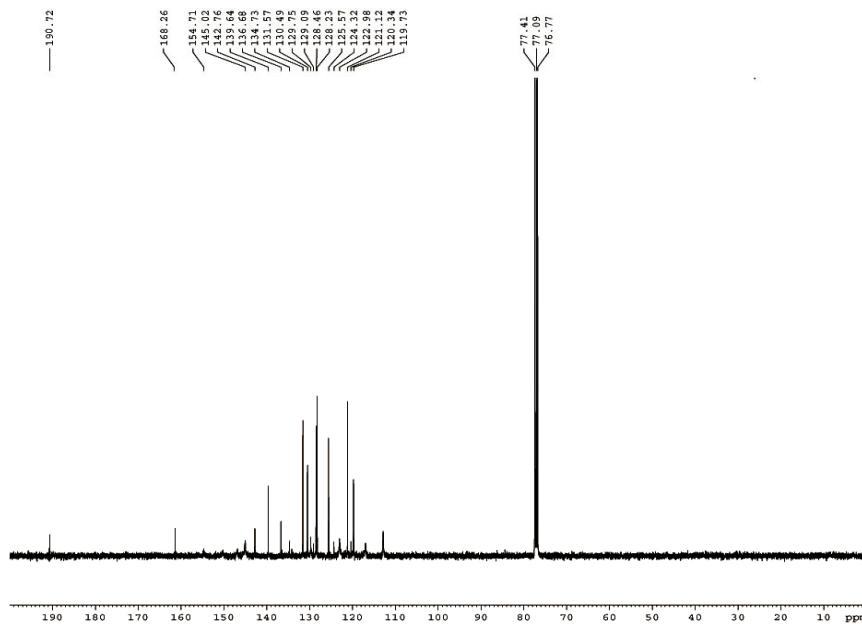
F2 - Acquisition Parameters
Date_        20170518
Time         10.52
INSTRUM      spect
PROBHD       5 mm PABBO BB-
PULPROG      zg30
TD           65536
SOLVENT      CDCl3
NS           16
DS           2
SWH          8223.685 Hz
FIDRES       0.125483 Hz
AQ           3.9846387 sec
RG           155.51
DW           60.800 usec
DE           6.50 usec
TE           292.8 K
D1           1.00000000 sec

===== CHANNEL f1 =====
NUC1         1H
P1           13.50 usec
PLW1        11.00000000 W
SFO1        400.1324710 MHz

F2 - Processing parameters
SI           65536
SF           400.1300141 MHz
WDW          EM
SSB          0
LB           0.30 Hz
GB           0
PC           1.00

```

Fig. S7 — ¹H NMR spectra of (3,4-bis(*E*)-(benzylideneamino)phenyl)(phenyl)methanone



```

Current Data Parameters
NAME          ROC1
EXPNO        1
PROCNO       1

F2 - Acquisition Parameters
Date_        20170518
Time         12.36
INSTRUM      spect
PROBHD       5 mm PABBO BB-
PULPROG      zgpg30
TD           65536
SOLVENT      CDCl3
NS           851
DS           4
SWH          24038.461 Hz
FIDRES       0.366798 Hz
AQ           1.3631988 sec
RG           195.62
DW           20.800 usec
DE           6.50 usec
TE           293.9 K
D1           2.00000000 sec
D11          0.03000000 sec

===== CHANNEL f1 =====
NUC1         13C
P1           8.25 usec
PLW1        55.40000153 W
SFO1        100.6228293 MHz

===== CHANNEL f2 =====
CPDPRG2     waltz16
NUC2         1H
PCPD2       90.00 usec
PLW2        11.00000000 W
PLW12       0.24750000 W
PLW13       0.20048000 W
SFO2        400.1316005 MHz

F2 - Processing parameters
SI           32768
SF           100.6127690 MHz
WDW          EM
SSB          0
LB           1.00 Hz
GB           0
PC           1.40

```

Fig. S7a — ¹³C NMR spectra of (3,4-bis(*E*)-(benzylideneamino)phenyl)(phenyl)methanone

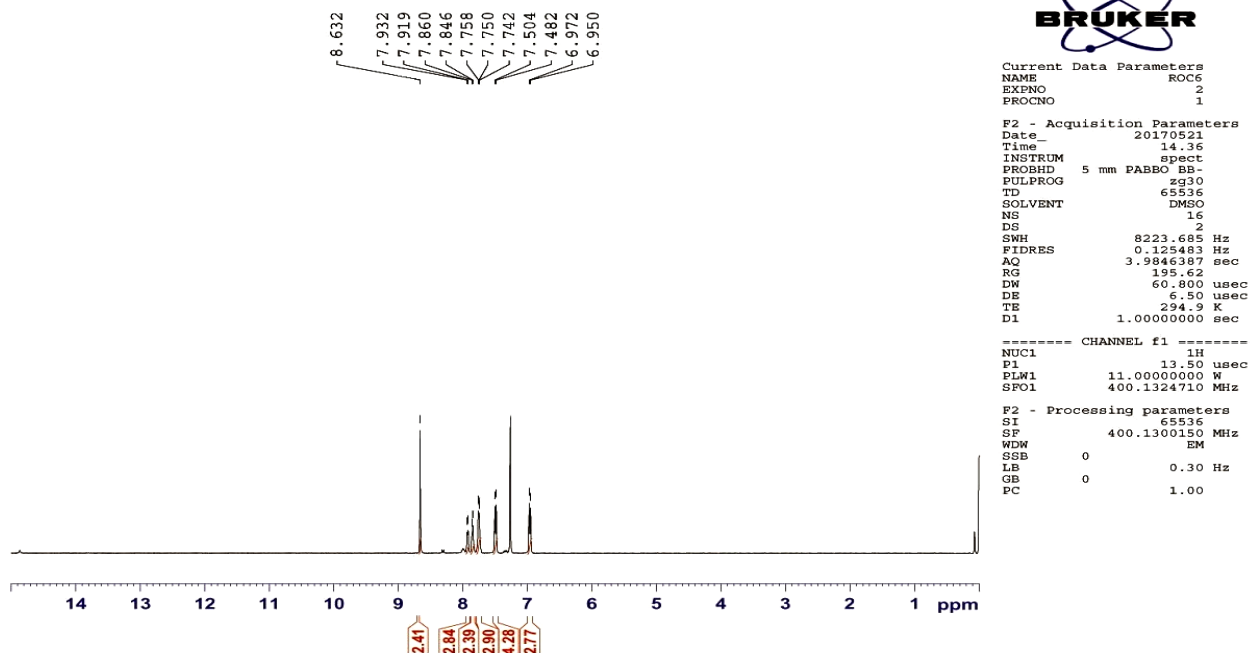


Fig. S8 — ¹H NMR spectra of (3,4-bis((*E*)-(4-fluorobenzylideneamino)phenyl)(phenyl)methanone

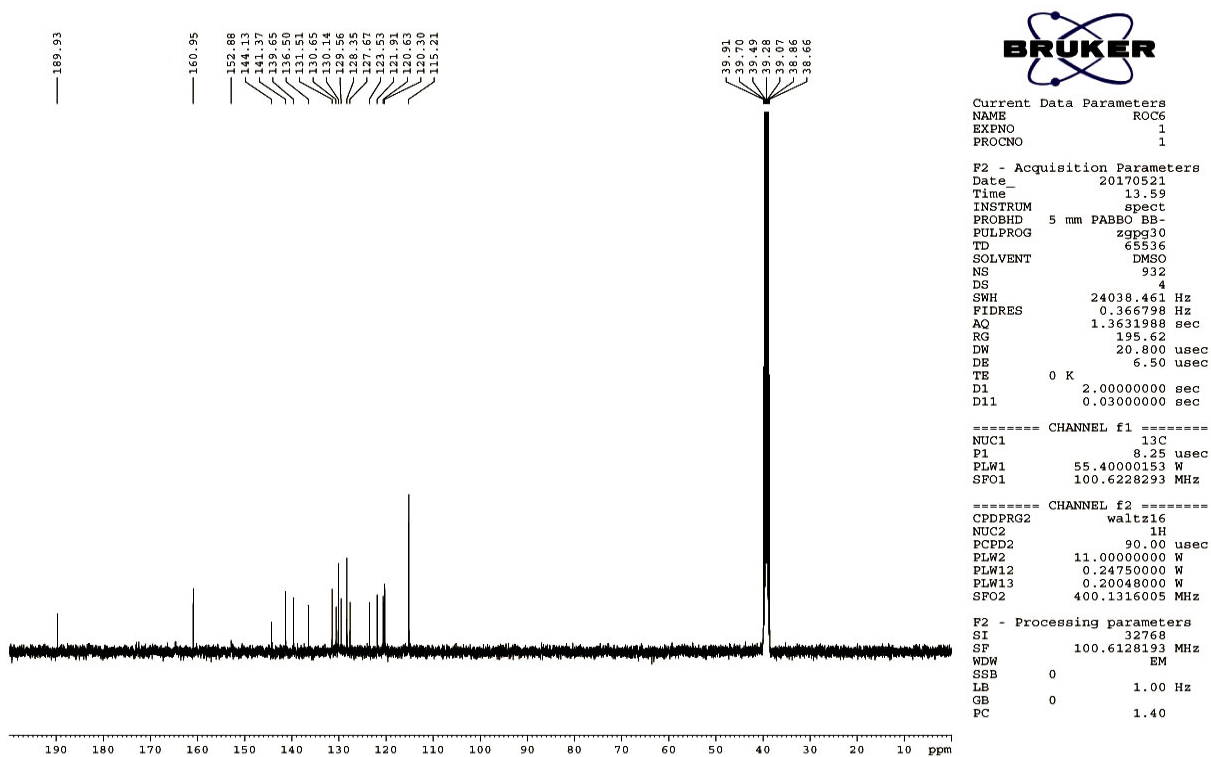


Fig. S8a — ¹³C NMR spectra of (3,4-bis((*E*)-(4-fluorobenzylideneamino)phenyl)(phenyl)methanone

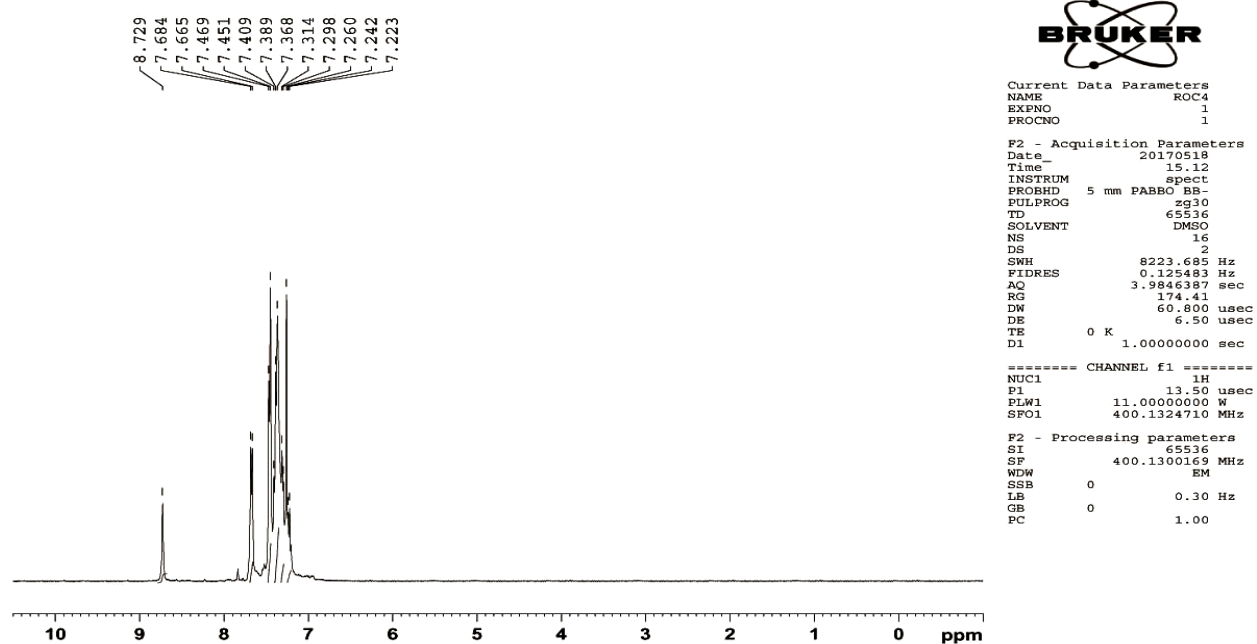


Fig. S9 — ¹H NMR spectra of (3,4-bis((*E*)-(4-chlorobenzylideneamino)phenyl)(phenyl)methanone

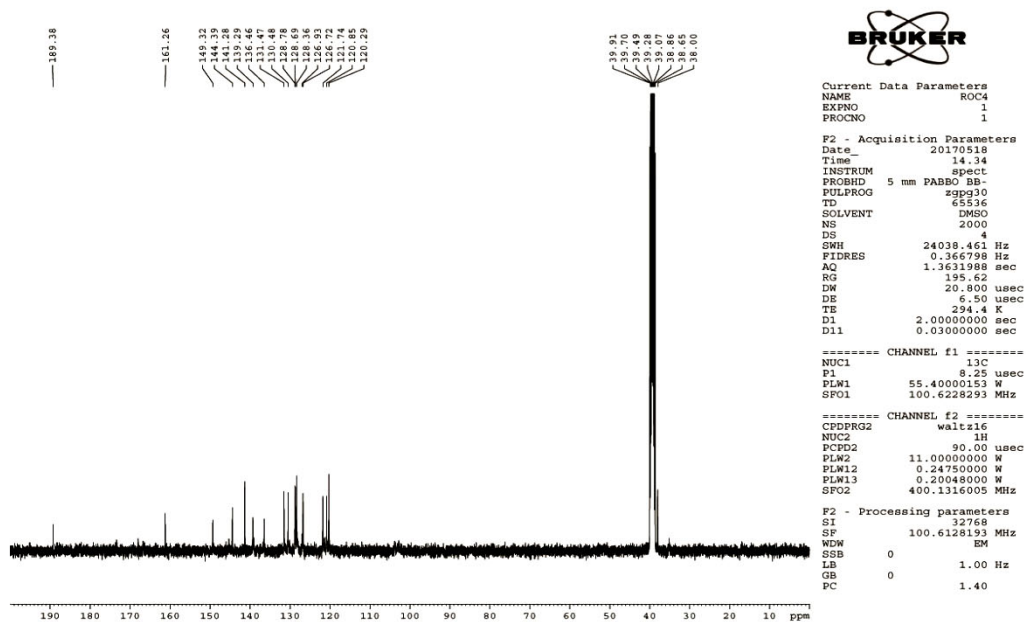


Fig. S9a — ¹³C NMR spectra of (3,4-bis((*E*)-(4-chlorobenzylideneamino)phenyl)(phenyl)methanone

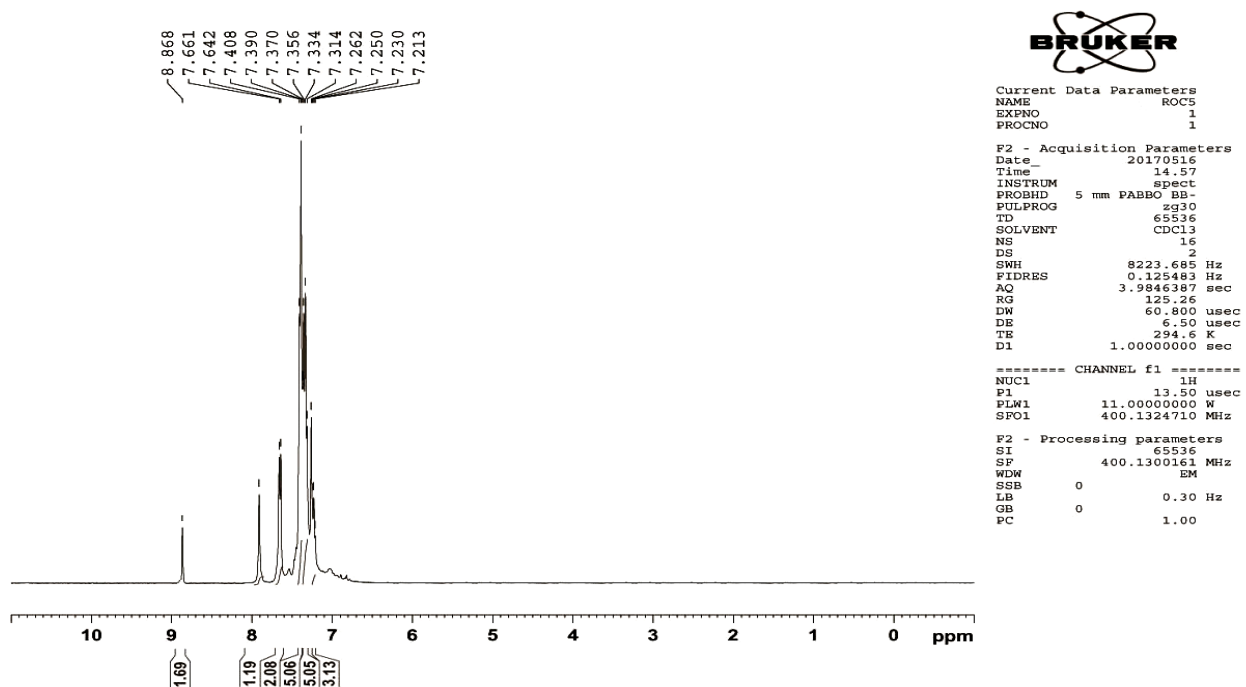


Fig. S10 — ¹H NMR spectra of (3,4-bis((*E*)-(4-bromobenzylideneamino)phenyl)(phenyl)methanone

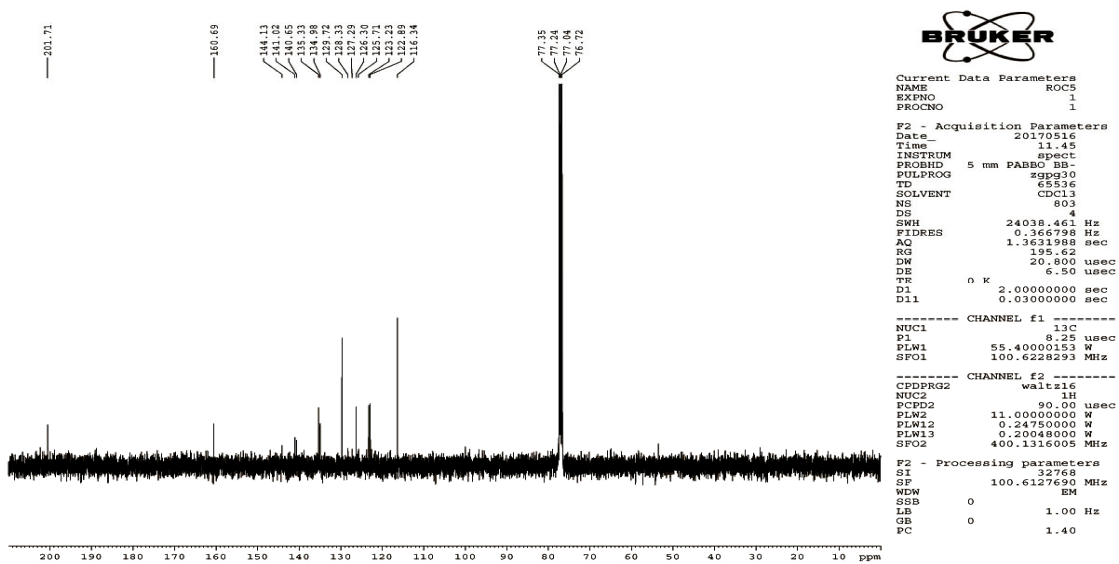


Fig. 10a — ¹³C NMR spectra of (3,4-bis((*E*)-(4-bromobenzylideneamino)phenyl)(phenyl)methanone

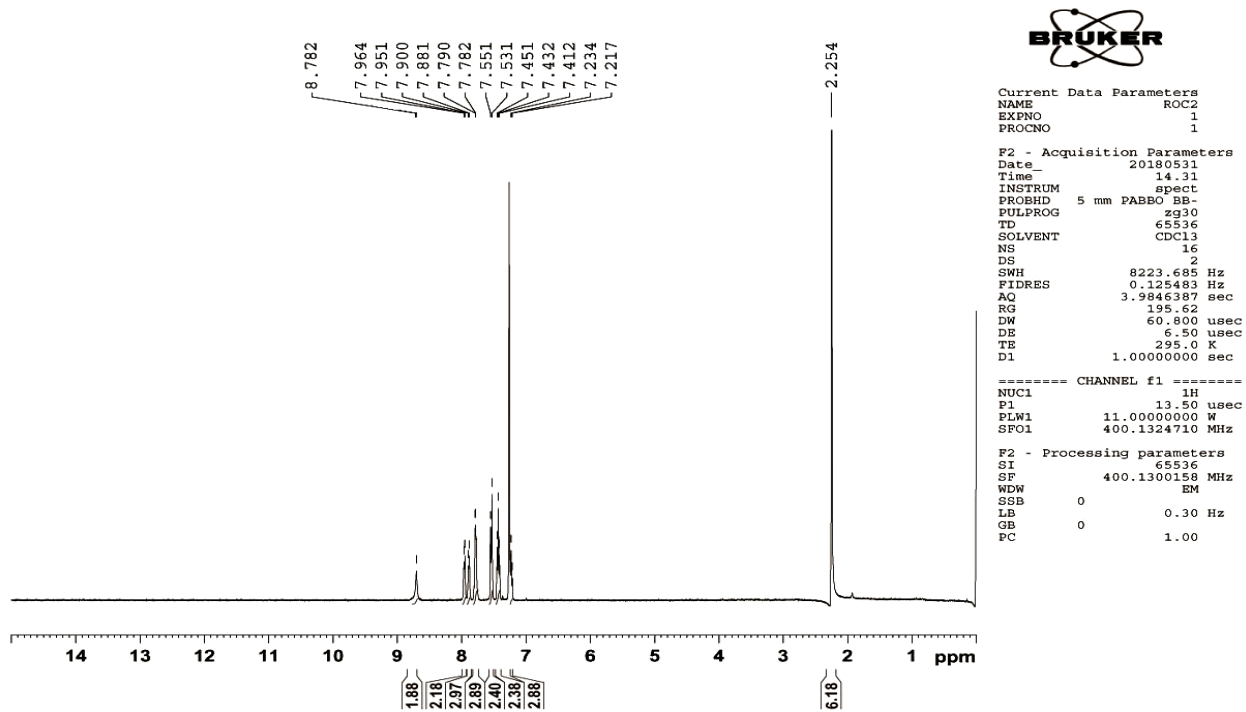


Fig. S11 — ¹H NMR spectra of (3,4-bis(*E*)-(4-methoxybenzylideneamino)phenyl)(phenyl)methanone

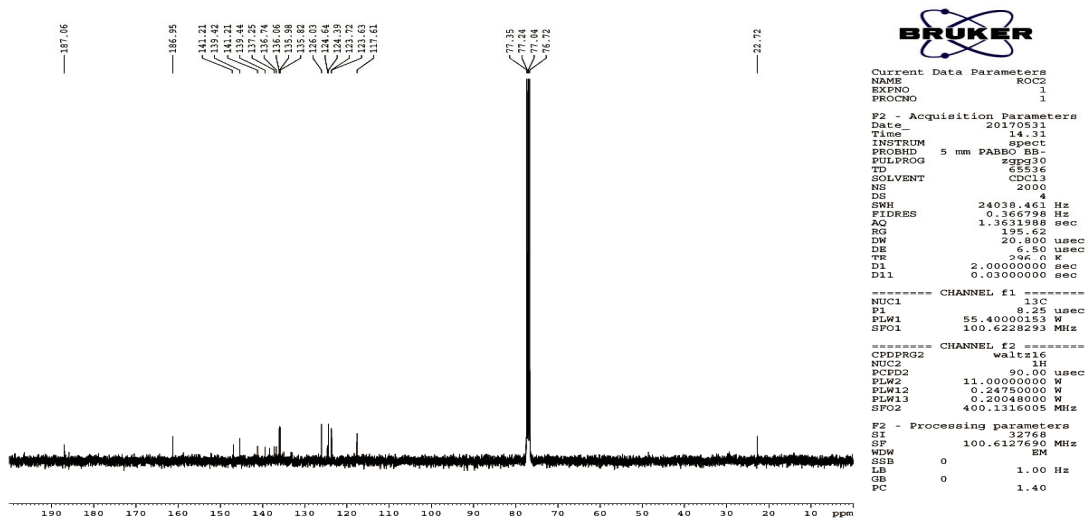


Fig. S11a — ¹³C NMR spectra of (3,4-bis(*E*)-(4-methoxybenzylideneamino)phenyl)(phenyl)methanone

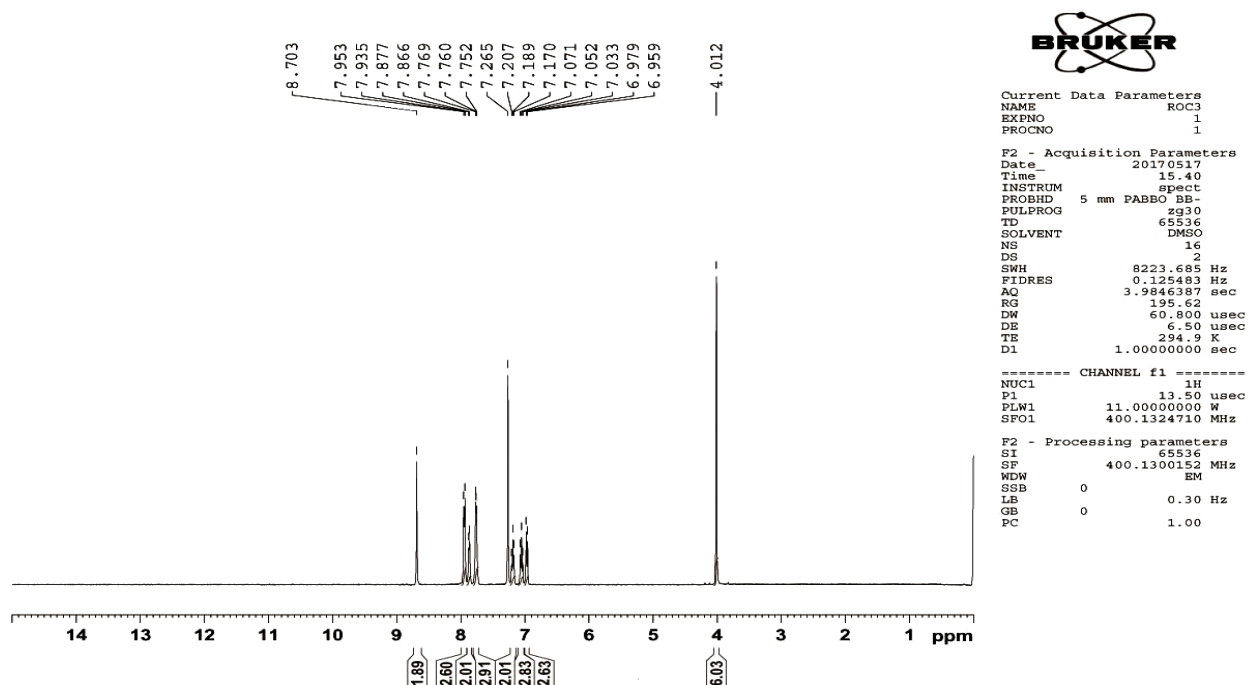


Fig. S12 — ¹H NMR spectra of (3,4-bis(*E*)-(4-methylbenzylideneamino)phenyl)(phenyl)methanone

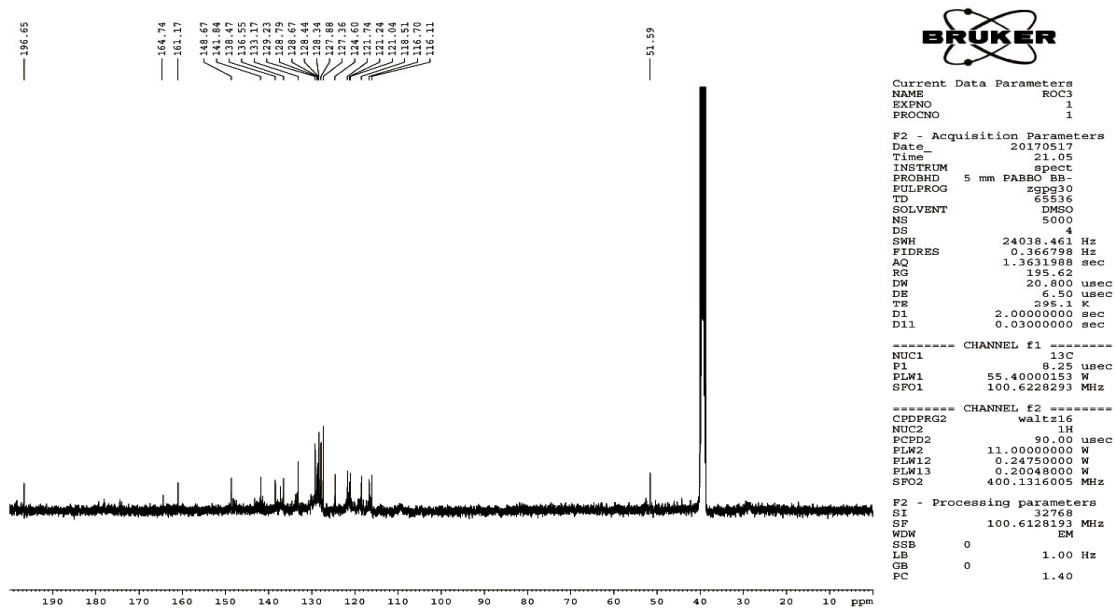


Fig. S12a — ¹³C NMR spectra of (3,4-bis(*E*)-(4-methylbenzylideneamino)phenyl)(phenyl)methanone

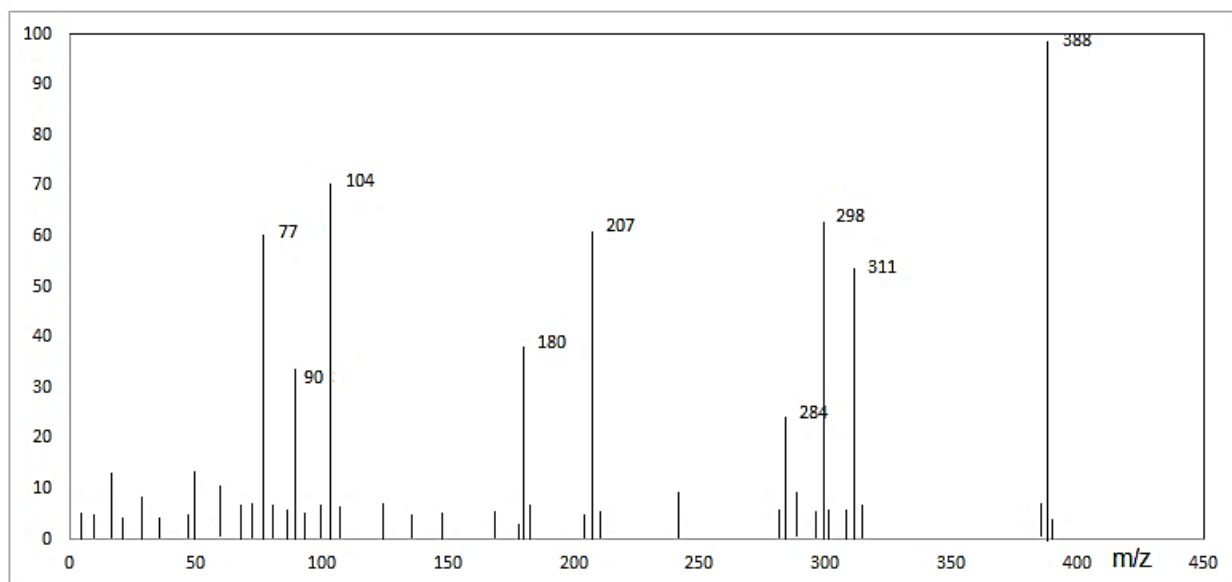


Fig. S13 — Mass spectra of (3,4-bis(*E*)-benzylideneamino)phenyl(phenyl)methanone

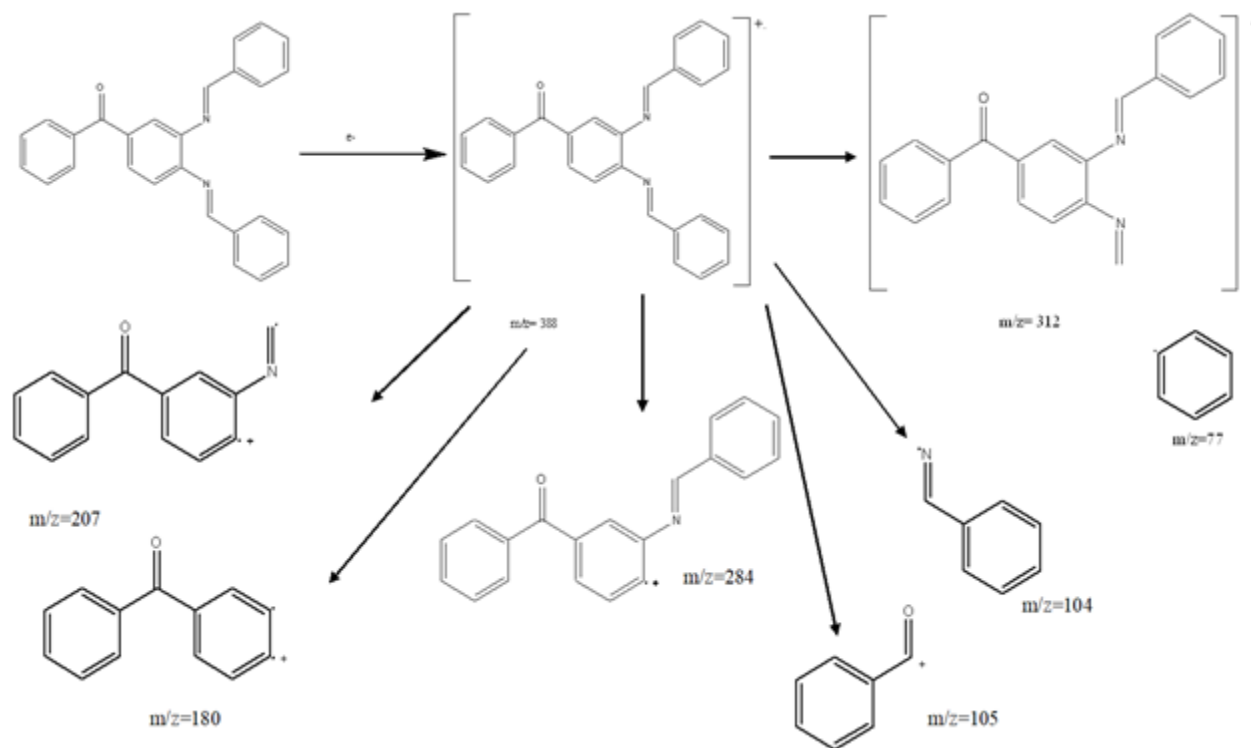


Fig. S13a — Possible assigned mass spectral fragments of (3,4-bis(*E*)-benzylideneamino)phenyl(phenyl)methanone

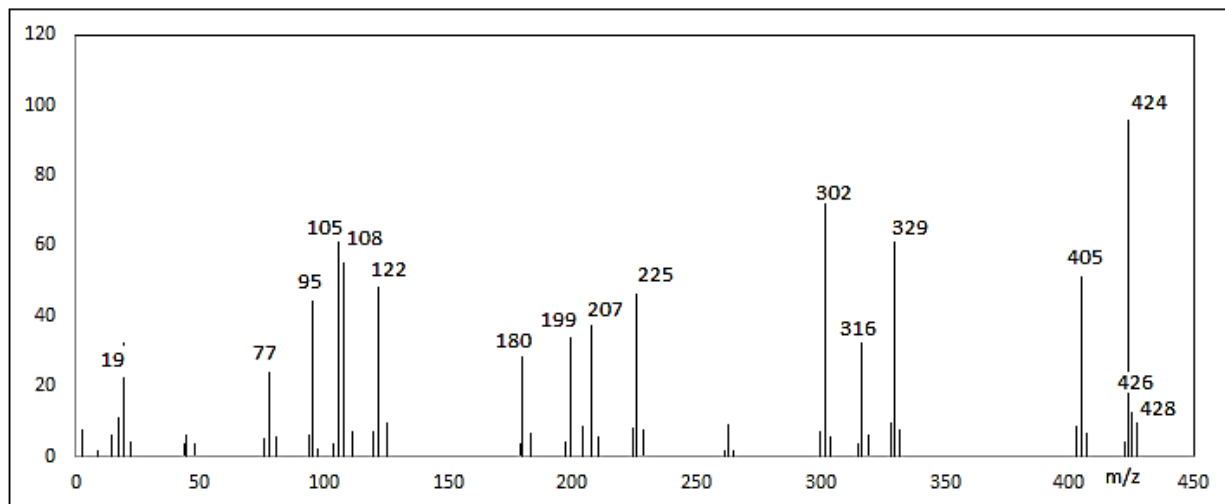


Fig. S14 — Mass spectra of (3,4-bis((E)-(4-fluorobenzylidene)amino)phenyl)(phenyl)methanone

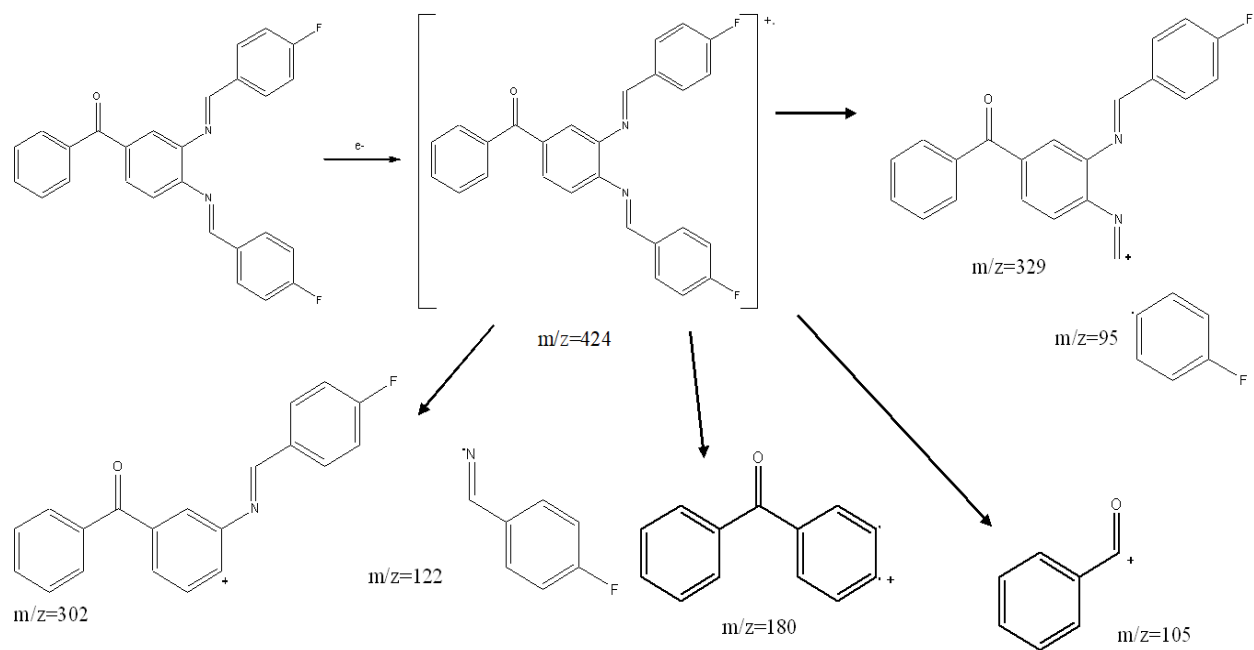


Fig. S14a — Possible assigned mass spectral fragment of (3,4-bis((E)-(4-fluorobenzylidene)amino)phenyl)(phenyl)methanone

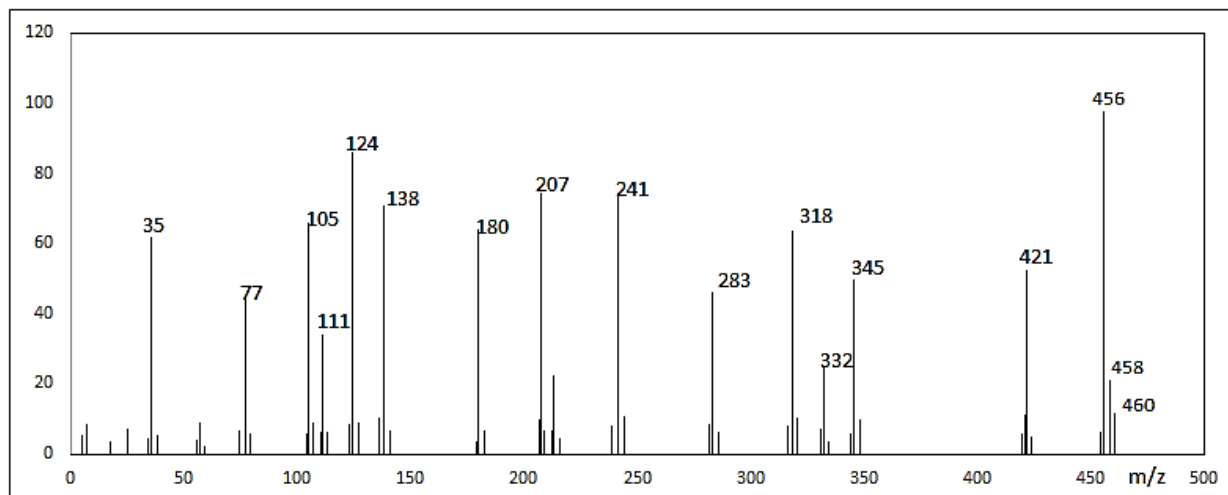


Fig. S15 — Mass spectra of (3,4-bis(*E*)-(4-chlorobenzylidene)amino)phenyl)(phenyl)methanone

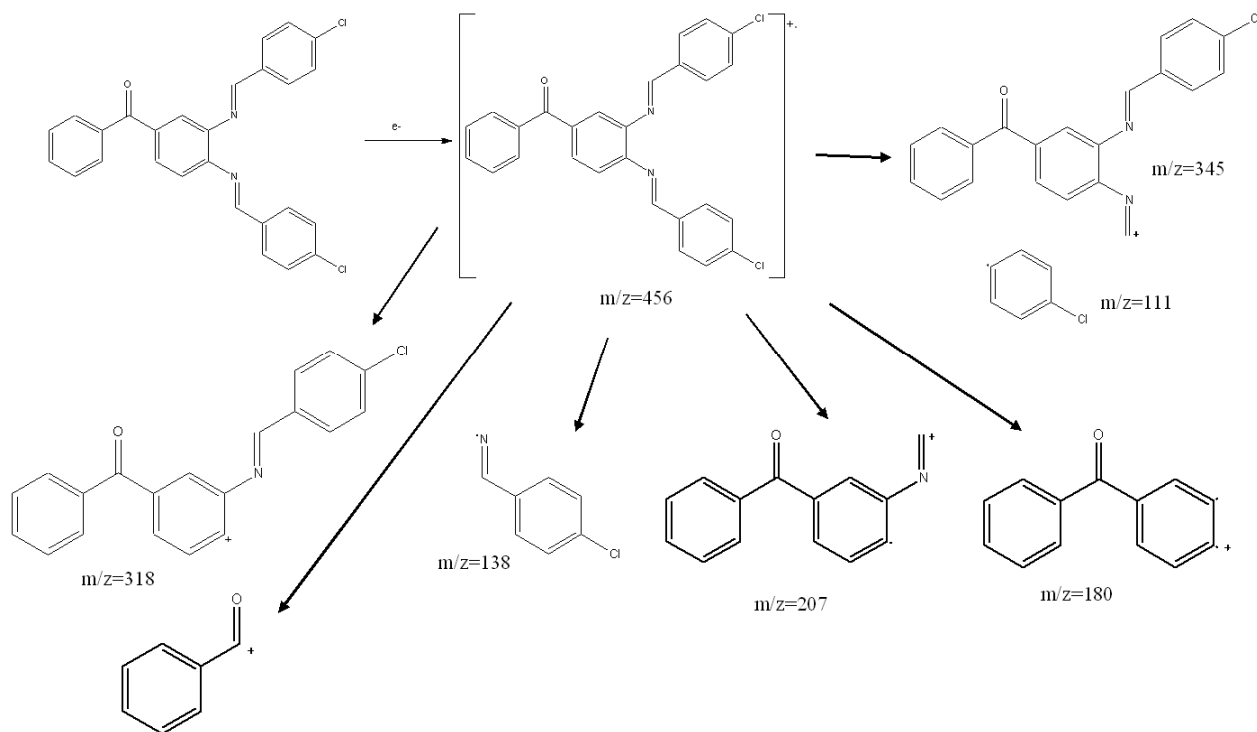


Fig. S15a — Possible assigned mass spectral fragments of (3,4-bis(*E*)-(4-chlorobenzylidene)amino)phenyl)(phenyl)methanone

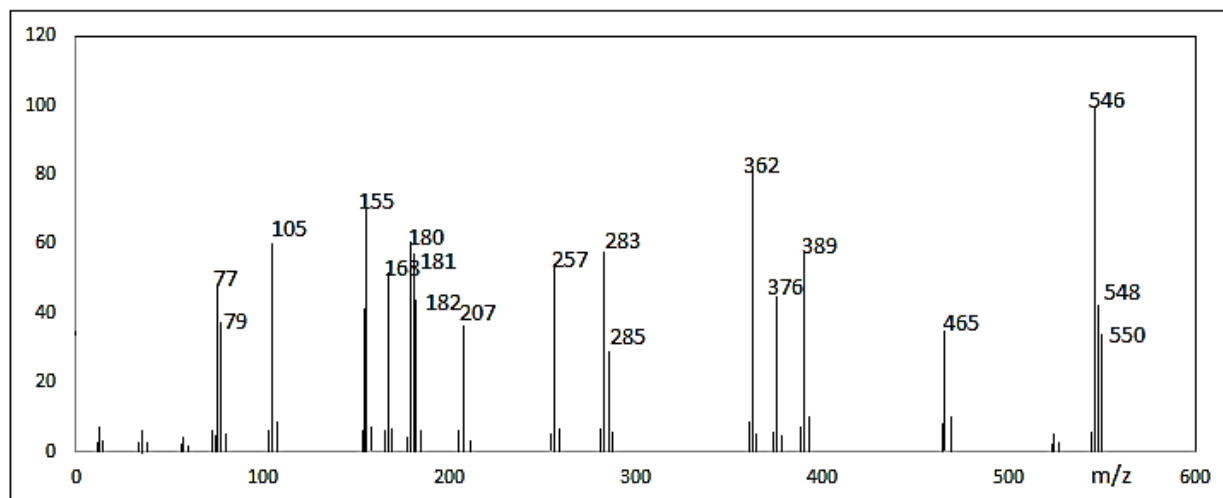


Fig. S16 — Mass spectra of (3,4-bis(*E*)-(4-bromobenzylidene)amino)phenyl)(phenyl)methanone

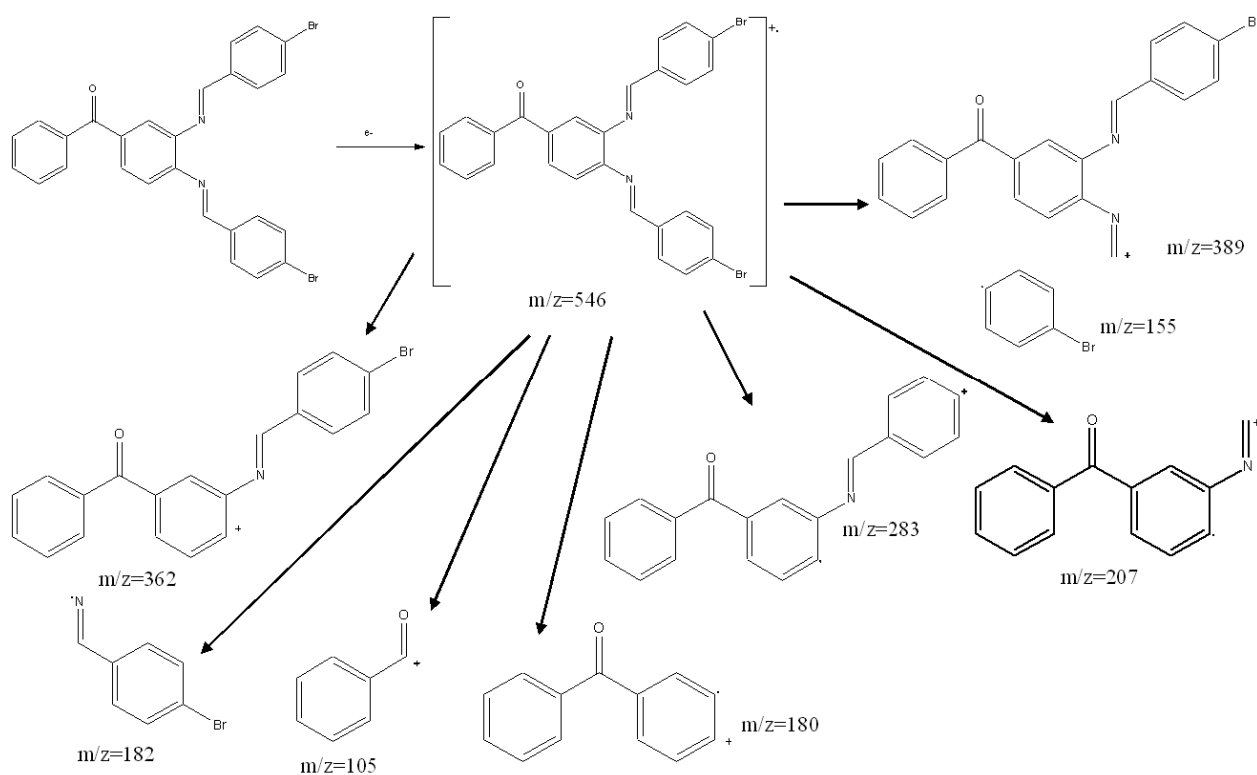


Fig. S16a — Possible assigned mass spectral fragments of (3,4-bis(*E*)-(4-bromobenzylidene)amino)phenyl)(phenyl)methanone

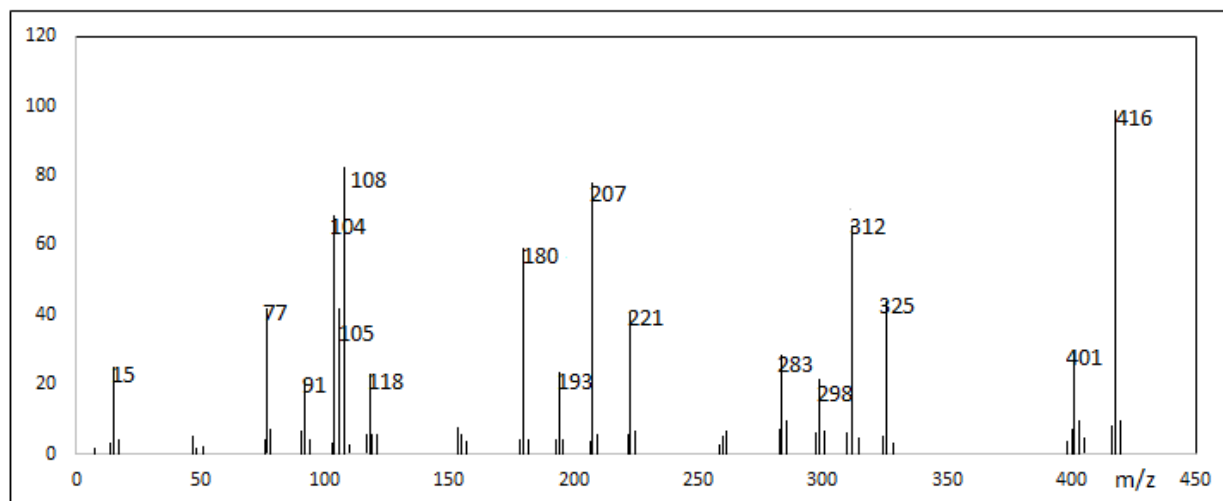


Fig. S17 — Mass spectra of (3,4-bis(*E*)-(4-methylbenzylidene) amino)phenyl) (phenyl) methanone

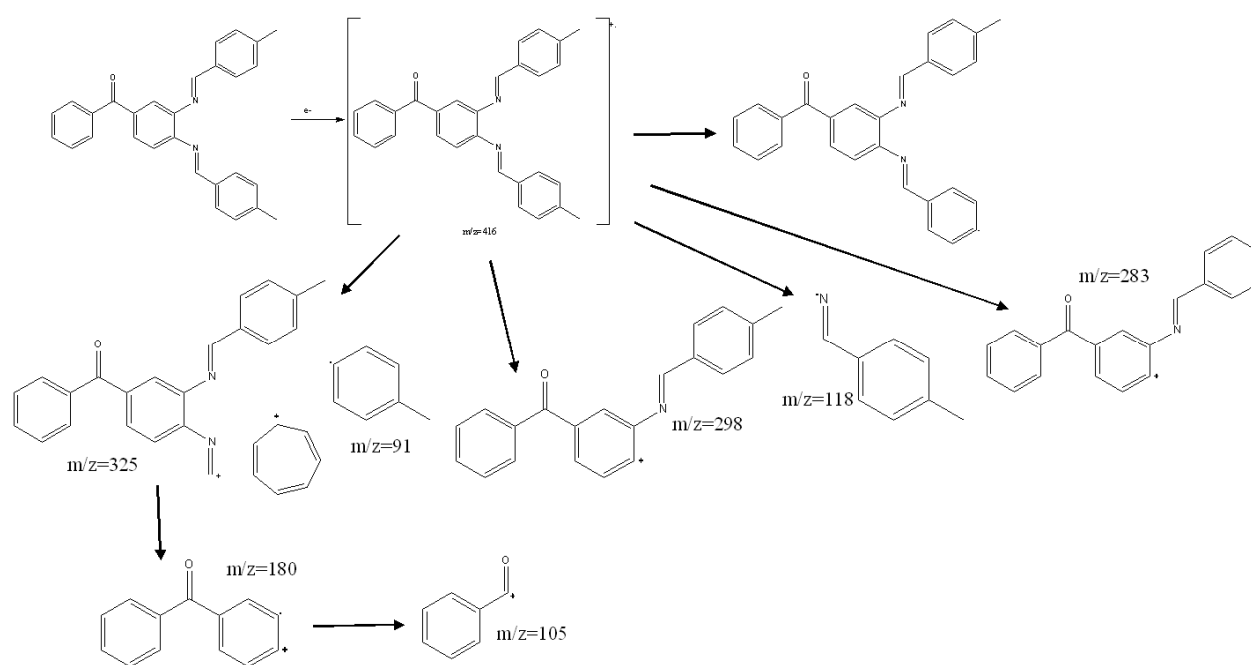


Fig. S17a Possible assigned mass spectral fragments of (3,4-bis(*E*)-(4-methylbenzylidene)amino)phenyl)(phenyl)methanone

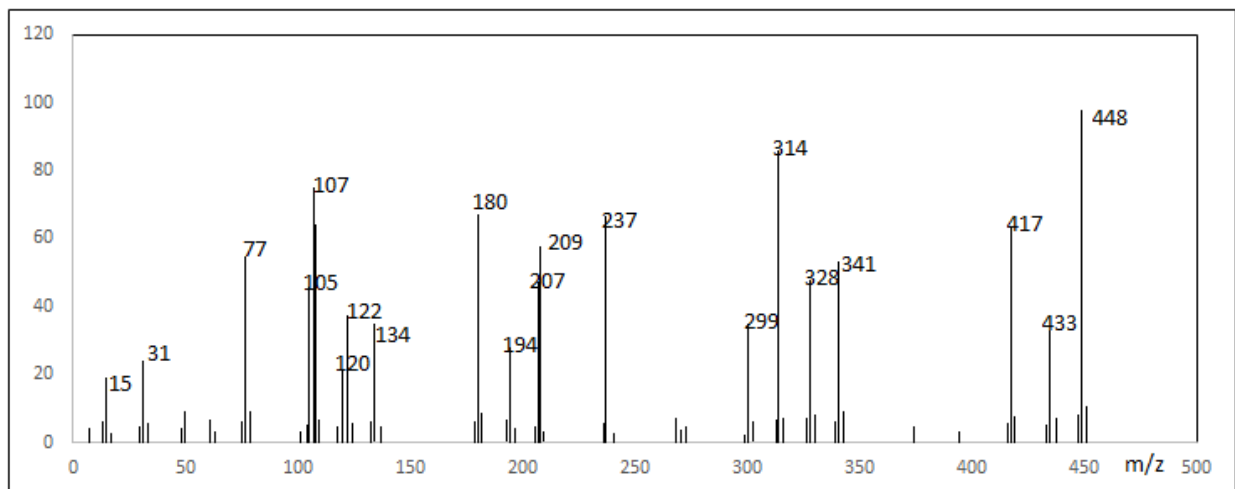


Fig. 18 — Mass spectra of (3,4-bis(*E*)-(4-methoxybenzylidene) amino)phenyl) (phenyl) methanone

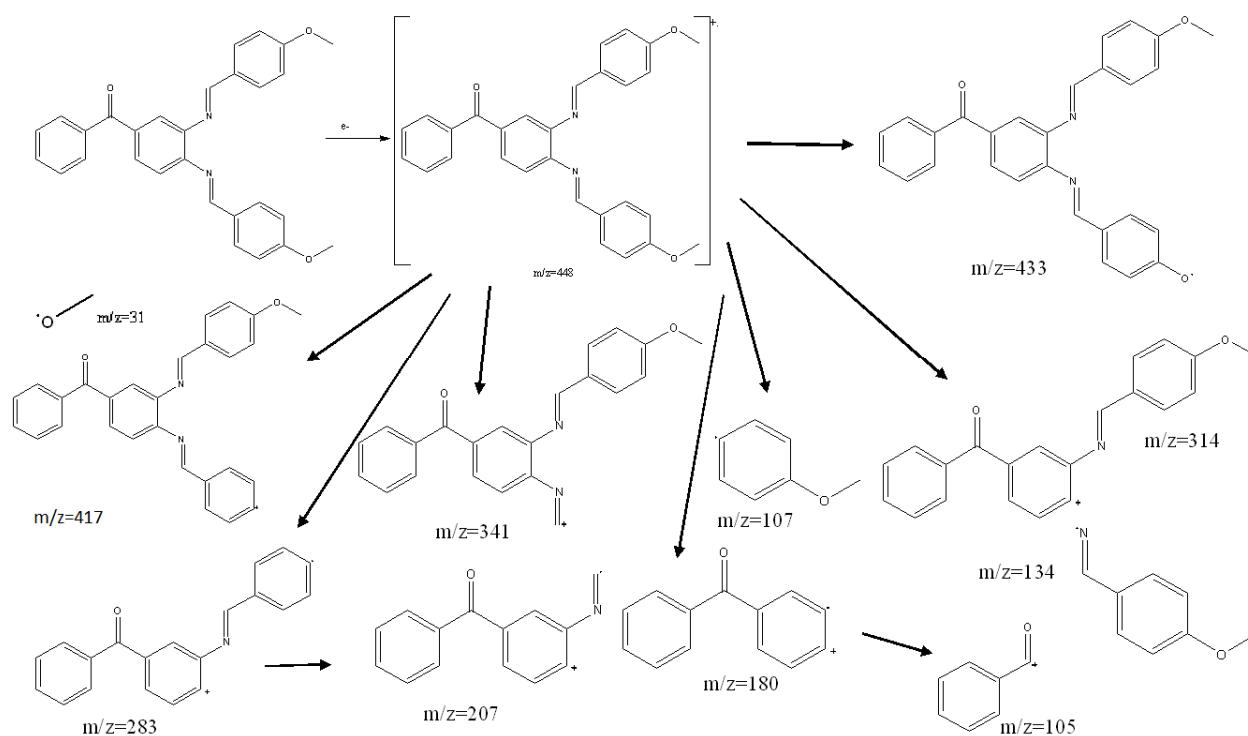


Fig. 18a — Possible assigned mass spectral fragments of (3,4-bis(*E*)-(4-methoxybenzylidene)amino)phenyl)(phenyl)methanone